

Active Fire Locations in Rift Valley Province Following Kenyan National Elections

Active fire locations detected with MODIS (27 December 2007 - 2 January 2008)

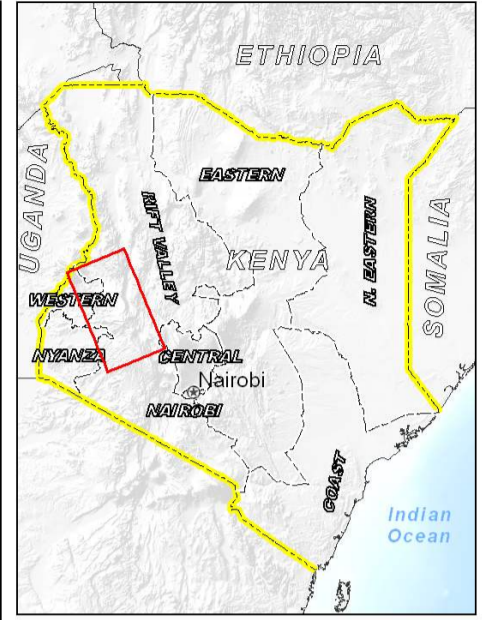
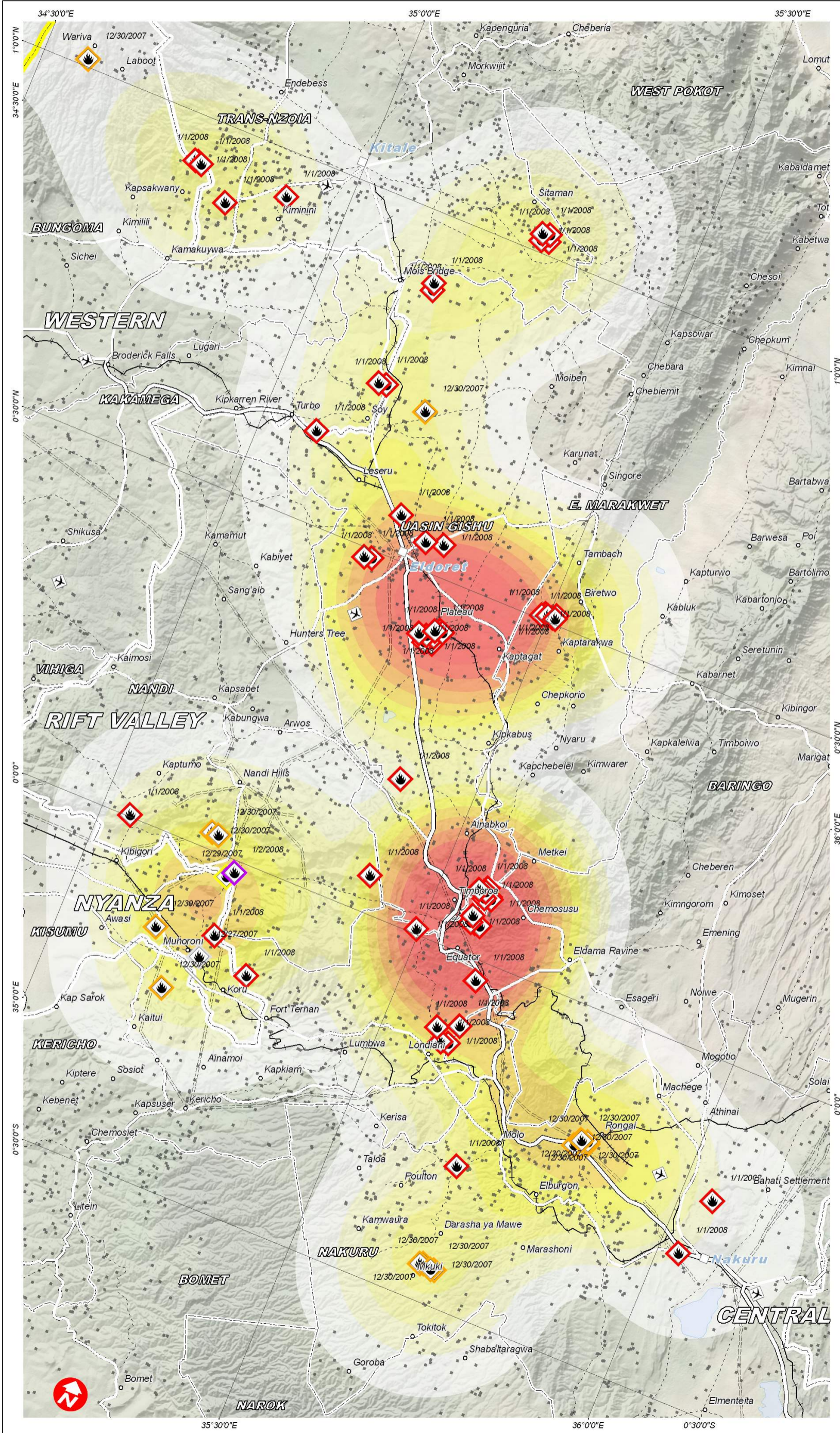
Fire & Civil Unrest

3 January 2008



Version 1.0

CE -2008-000001-KEN



Description

This map illustrates the detected active fire locations within the Rift Valley Province in western Kenya following the national elections on 27 December 2007. These fire locations were detected by the MODIS Aqua and Terra satellites covering the time period from 27 December to 2 January 2008. An evaluation has been made of the chronology and spatial context of this data, and it is probable that a majority of detected fires (peaking on 1 January 2008) are directly or indirectly linked to the electoral civil unrest.

Please note that this fire data product does not discriminate between normally-occurring fires (e.g. slash and burn agriculture) and those resulting from arson or conflict, and therefore contains a large degree of uncertainty as to the cause. Also note that this product has not recorded all fires in this area because of limited duration / area affected, and because of gaps in collection on 31 Dec. 2007 and 2 January 2008.

The depiction and use of boundaries, geographic names and related data shown here are not warranted to be error-free nor do they imply official endorsement or acceptance by the United Nations. This map was produced by the United Nations Institute for Training and Research (UNITAR) Operational Satellite Applications Program (UNOSAT). UNOSAT provides satellite imagery and related geographic information to UN humanitarian and development agencies and their implementing partners.

Map Legend

Population	Active Fire Locations (by date mm/d/yyyy)
★ Capital	🔥 1/2/2008
□ Main City or Town	🔥 1/1/2008
○ Town / Village	🔥 12/31/2007
■ Building Cluster	🔥 12/30/2007
Transport Sites	🔥 12/29/2007
✈ Airport / Airfield	🔥 12/28/2007
Administrative	🔥 12/27/2007
— International Border	
— Province Boundary	
— District Boundary	
— Boundary	
Transport Lines	Relative Density of Active Fires
— Main Road	High
— Secondary Road	+
— Minor Road / Trail	⬆
— Railroad	⬆
— Utility Line	⬆
Water Bodies	Low
○ Lake / Main River	

(Map view rotated 27 degrees from north)

Map Scale for A3: 1:640,000

0 2.5 5 10 15 20 25 Kilometers

Fire Data MODIS Aqua - Terra
 Fire Processing U. of Maryland, NASA
 Fire Dates 27 Dec 2007 - 2 Jan. 2008
 Analysis UNOSAT
 Elevation Data SRTM-NASA
 GIS Data NGA, USGS, GIST, UNOSAT
 Map Production UNOSAT (3 January 2008)
 Projection UTM, Zone 36 South
 Datum WGS 1984

UNOSAT

satellite solutions for all

www.unosat.org

Contact Information: info@unosat.org
 24/7 Hotline: +41 76 487 4998