

# North East Asia Wildland Fire Network



## Forest Fire Statistics in Republic of Korea

Date: 1 June 2006

Period: 1 January to 31 May 2006

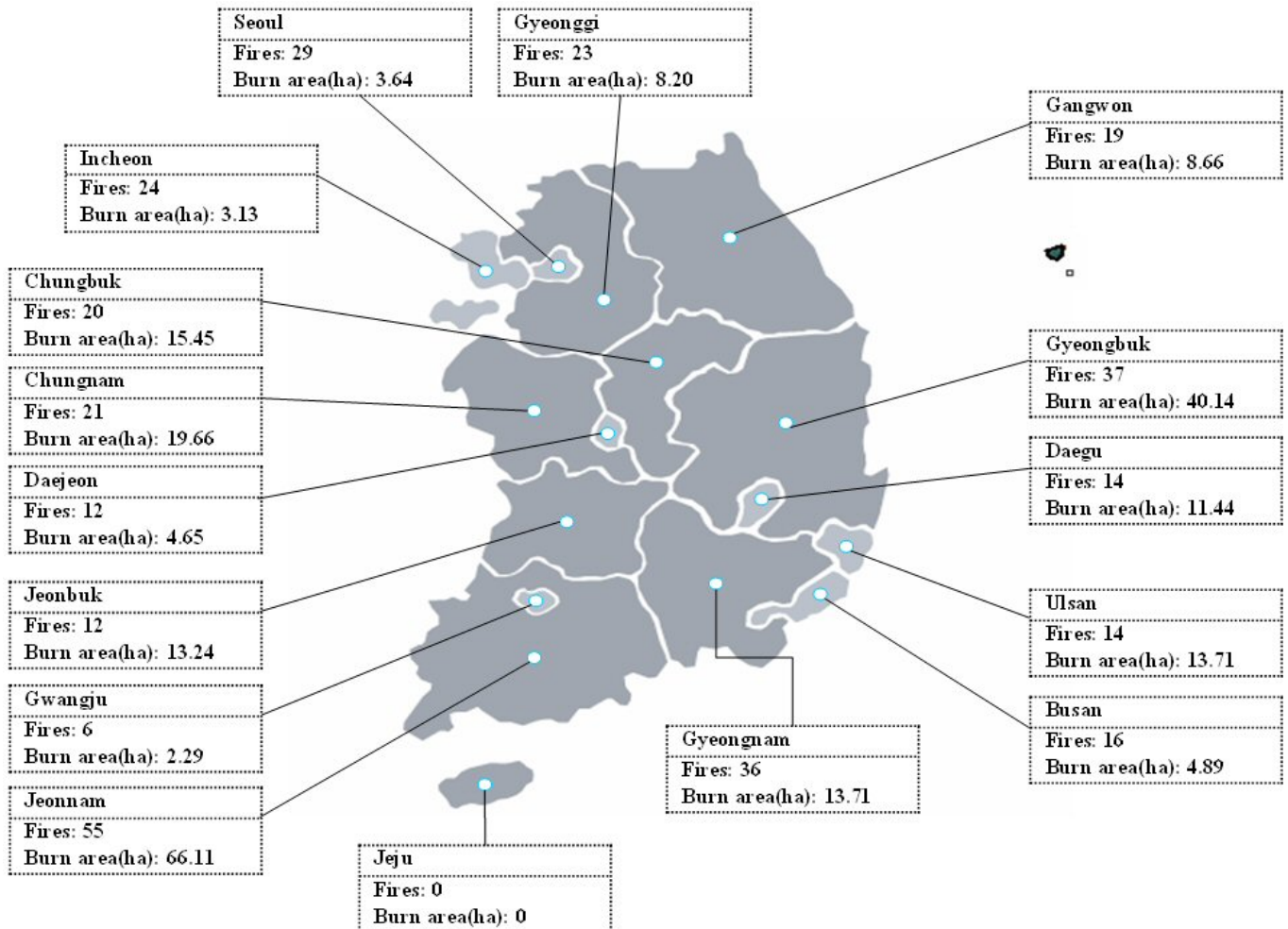
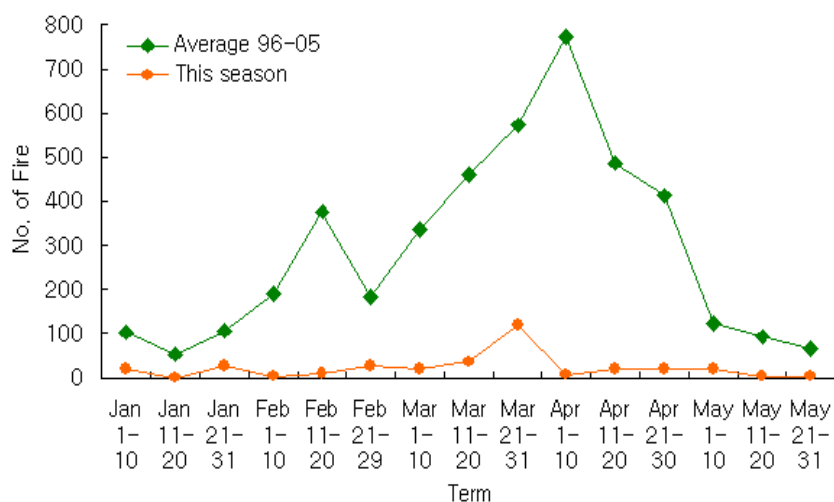


Figure 1. Forest fires and burned area (ha) by region from 1 Jan. to 15 May 2006.

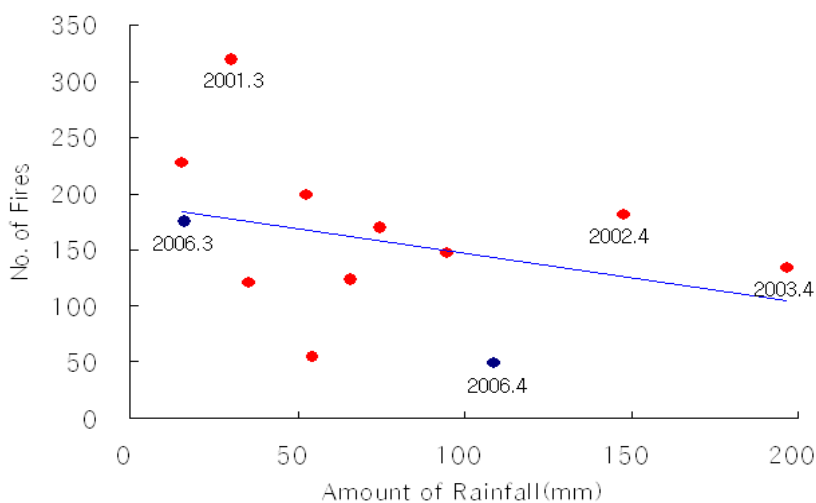
**Table 1. Forest fires and burned area(ha) by month from 1 Jan to 15 May 2006 and average for 10 years(1996-2005).**

Month	No. of fires		Burned area (ha)	
	This season	Average 96-05	This season	Average 96-05
<b>Total</b>	338	435	228.92	4,377.62
<b>Jan</b>	48	26	29.13	32.51
<b>Feb</b>	41	75	13.32	115.59
<b>Mar</b>	175	137	154.48	363.1
<b>Apr</b>	49	168	22.88	3,832.8
<b>May</b>	25	29	9.11	33.62

**Figure 2. Forest fires and burned area(ha) by month from 1 January to 15 May 2006.**



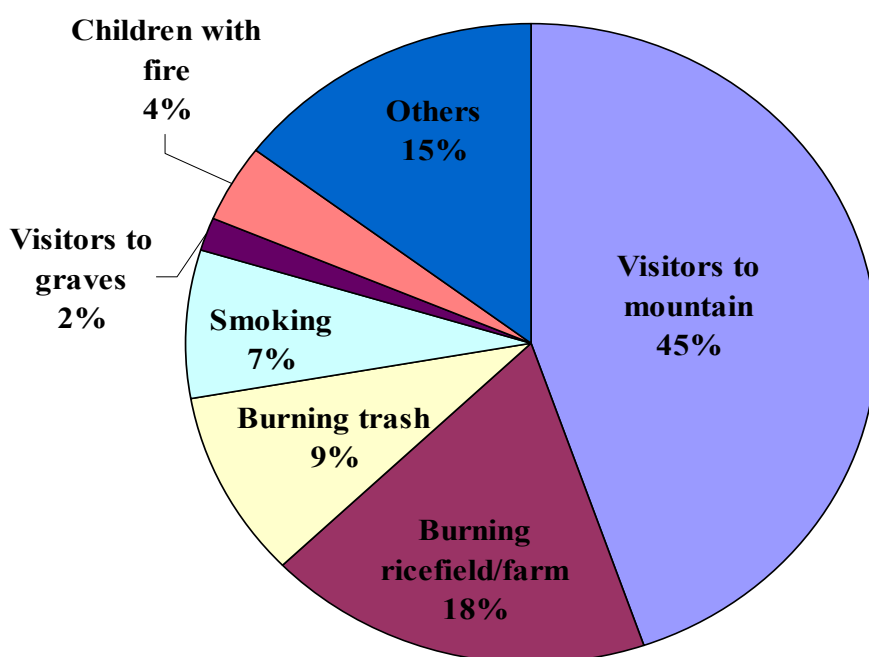
**Figure 3. Forest fires distribution by rainfall per month from Jan. to May.**



- Specially, Forest fire is very dangerous on Aril in Korea, but fig 2 has shown different pattern on April. It was reduced due to rainfall on every holidays as follows the ch'ongmyŏng, one of the 24 seasonal divisions (about 5 April) and arbor day on April 2006.(Fig. 3)

**Table 2. Forest fires by causes from 1 January to 15 May 2006.**

Month	Visitors to mountain	Burning rice field/farm	Burning trash	Smoking	Visitors to graves	Children with fire	Others	Total
Jan	23	3	3	4	1	2	12	48
Feb	15	15	2	4	0	3	2	41
Mar	73	39	19	12	4	7	21	175
Apr	24	4	6	3	0	1	11	49
May	16	0	2	2	1	0	4	25
<b>Total</b>	151	61	32	25	6	13	50	338



**Figure 3. Forest fires by causes from 1 January to 15 May 2006.**

For more information ;

<http://www.foa.go.kr>, <http://forestfire.kfri.go.kr>