
Bonn International News, March 2023

[*Ausgabe 3 / 2023 - März 2023*](#)

Engagement of Bonn Organizations in War and Earthquake Zones

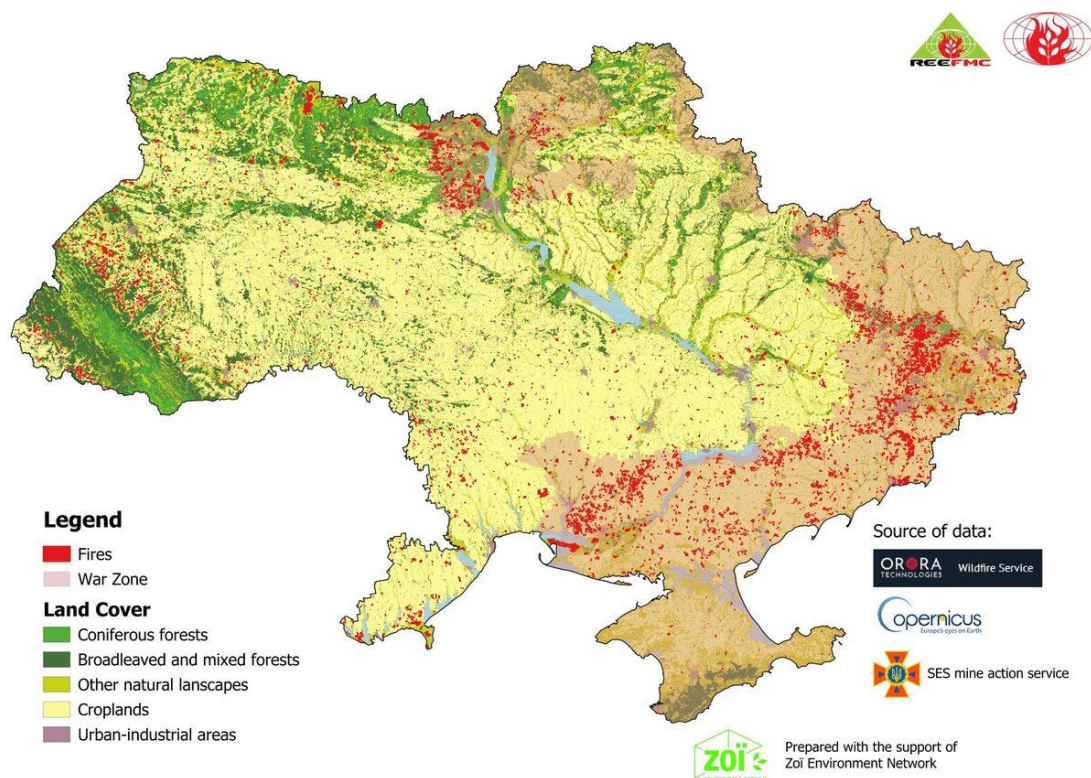
Wars and earthquakes are an essential threat to vital infrastructure, as recently shown by the severe earthquake in the Turkish-Syrian border region and the ongoing war in Ukraine. In this article, three partner organizations of the network describe how they are supporting these regions in various ways.

Wildfires: Collateral damages of war and nuclear heritage in Ukraine

During the war, wildfires are occurring as collateral damages in the active combat zone around the line of contact. Starting end of February 2022, the regional branch of the Freiburg-based Global Fire Monitoring Center (GFMC), the Regional Eastern Europe Fire Monitoring Center (REEFMC) based in Kyiv, is monitoring the situation 24/7. Regularly issued Landscape Fire Bulletins provide updates on wildfires on the territory of Ukraine, including forests, protected areas and agricultural lands. Monthly bulletins are published during the fire season between March and October and include updated maps of active fires detected by satellite sensors, fire statistics, maps and details of large fires. Safety Advisories have been issued to address the threats of wildfires burning on terrain contaminated with land mines, unexploded ordnance (UXO) and radioactivity. Furthermore, GFMC and REEFMC have worked with WWF Ukraine in addressing the problem of forest management on UXO terrain and are currently working with the Organization for Security and Cooperation in Europe (OSCE) on the “Assessment of environmental impacts of the war against Ukraine and options for remediation”. Furthermore, GFMC and REEFMC are supporting the activities of the Ministerial Conference for the Protection of Forests in Europe (FOREST EUROPE) in implementing the Ministerial Decision “Supporting the recovery and sustainable management of Ukrainian forests and its forest sector“ of the 45 signatory states.

Authors:

- Johann Georg Goldammer, Global Fire Monitoring Center (GFMC), Freiburg, Germany, member of DKKV
- Sergiy Zibtsev and Oleksandr Soshenskyi, Regional Eastern Europe Fire Monitoring Center (REEFMC), Kyiv, Ukraine



This latest map shows the locations of wildfires and agricultural burning in 2022. The REEFMC utilized two different sources of remote sensing data to detect fires and map burned areas. The ORORA wildfire monitoring technology was used to identify ignitions. It combines different fire detection approaches provided by more than 20 satellites for a daily identification of fire locations. The total area of landscape fires in Ukraine during 2022 reached 755 600 ha. REEFMC revealed the following types of landscapes that were mostly affected by fires: Croplands (419 300 ha), forests (56 700 ha), and abandoned lands (273 900 ha). In total, about 20 000 fires were detected in 2022. They were mostly (50.3 %) burned within 60-km buffer zone built along a daily front line, while 42.3 % of all fires occurred in occupied territories. Largest areas affected by fires were in Donetsk (145 900 ha), Kherson (84 100 ha), Kyiv (70 800 ha), Zaporizha (65 400 ha), Luhansk (65 300 ha), Mykolaiv (47 800), and Kharkiv oblasts (42 500 ha).

Links

- [GFMC: Fire Management on Terrain Contaminated by Radioactivity, Unexploded Ordnance and Land Mines \(opens in a new tab\)](#)
- [Regional Eastern Europe Fire Monitoring Center: Landscape Fire Monitoring Bulletins and Advisories \(opens in a new tab\)](#)
- [Forest Management on Territories Contaminated with UXO \(Ukrainian\) \(opens in a new tab\)](#)
- [GFMC and Forest Europe: Thematic cooperation \(since 1990\) \(opens in a new tab\)](#)
- [German-Ukrainian scientific cooperation: Transformation of Pine Forests to a Close-to-Nature Forest Management in Ukraine and with special Consideration of Resilience to Fire and Climate Extremes such as Drought](#)