

Regional Pan-Asia / Pacific Consultation on Building Advanced National and Regional Capacities in Integrated Fire Management based on Participatory Involvement of Local Communities
20-22 November 2012, Lalitpur, Nepal

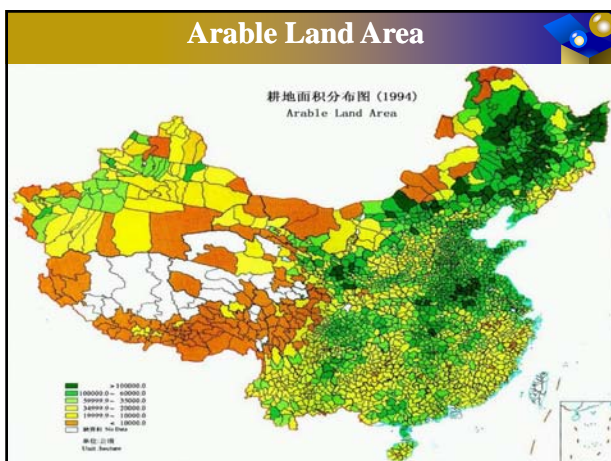
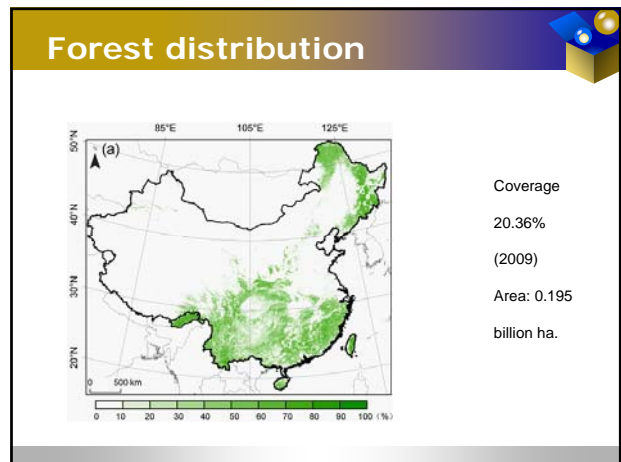
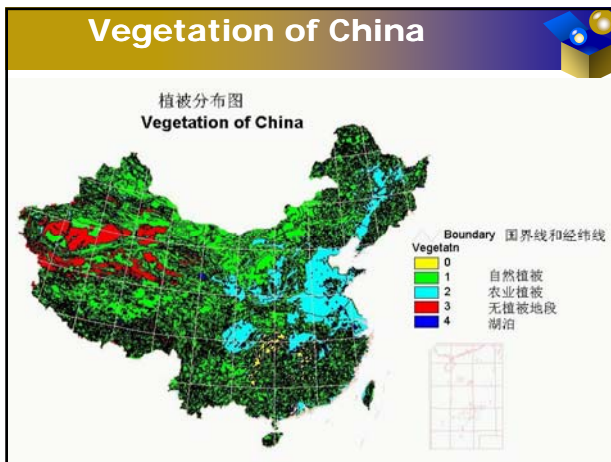
Community-based Fire Management in China

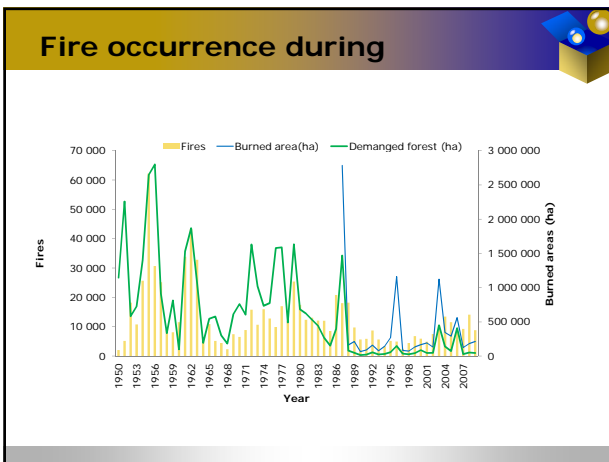
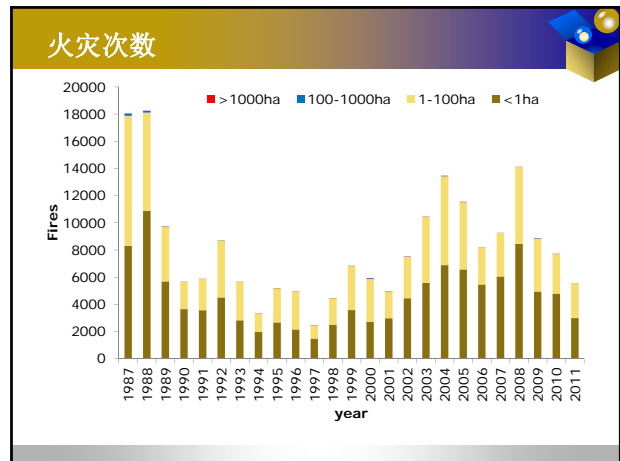
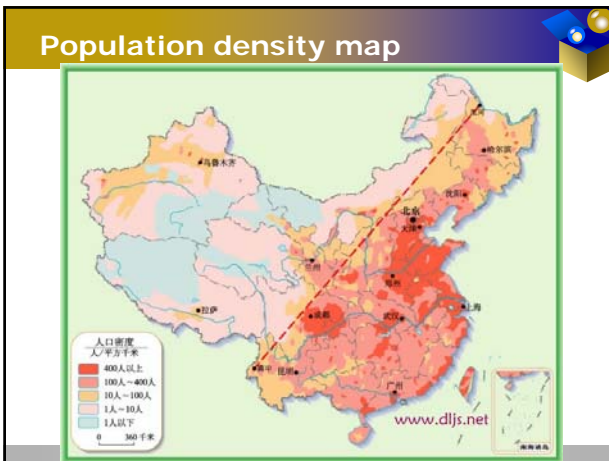
Xiaorui Tian

Research Institute of Forest Ecology, Environment and Protection
Chinese Academy of Forestry, Beijing, China

Outline

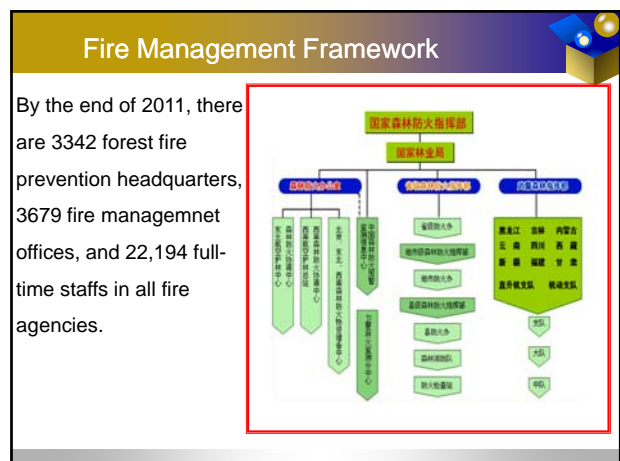
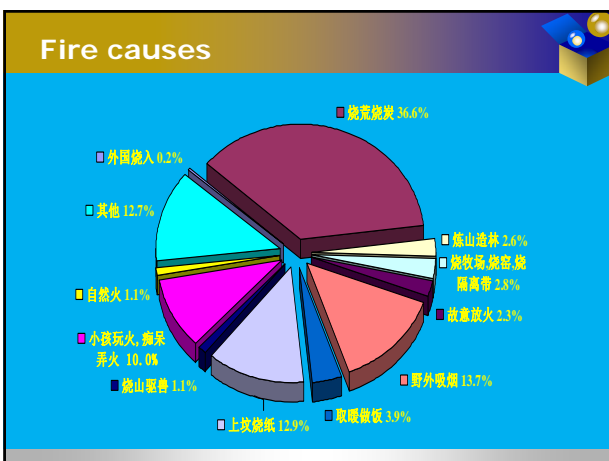
- ❖ **Background**
- ❖ **Fire management organization**
- ❖ **Community involvement**
 - **Forest fire prevention responsibility**
 - **Fire prevention**
 - ❖ **Publicity on forest fire prevention**
 - ❖ **Fire sources management**
 - ❖ **Forest fire monitoring**
 - **Safe fire use**
 - **Forest fire fighting**

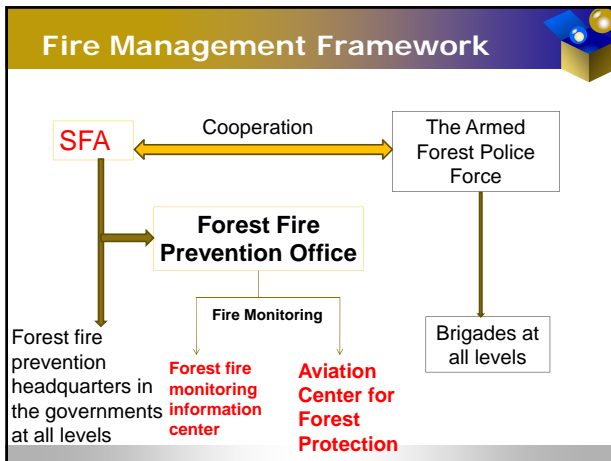




CAUSES OF FOREST FIRES

- ❖ human activities were mainly attributable to the forest fire, occupying more than 98%.
- ❖ Take 2010 for instance, charcoaling, burning paper as sacrificial offerings, smoking in forest areas, or fires caused by children and the mentally handicapped account for 34.1%, 18.1%, 5.9%, 4.3%, and 3.5% respectively.
- ❖ In Daxing'anling, northeastern China, the lightning fires accounted for about 30%.
- ❖ In southwestern and southern China, many fire caused from prescribed fires in farmland.





National policies and regulations

- ❖ Forest law
- ❖ Forest fire prevention regulations
- ❖ Grassland Fire Prevention regulations
- ❖ Regulations for the implementation of Forest Law



Forest fire prevention protocol

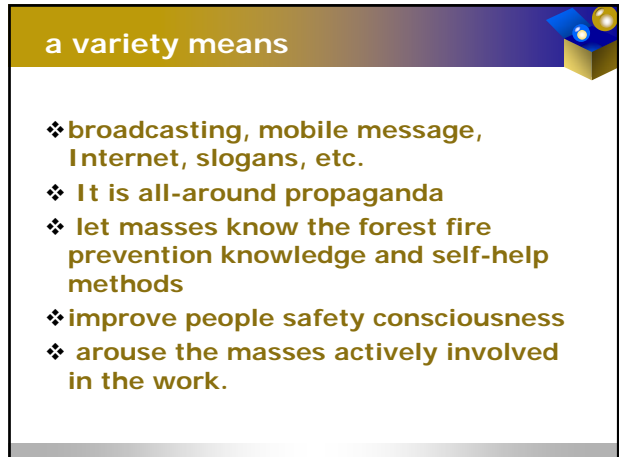
- ### The responsibility agreements
- ❖ defined the management responsibilities clearly.
 - ❖ County Government need sign responsibility agreements on forest fire prevention with town government
 - ❖ similar agreements between town and village, and village committee and village group.

Fire fighting forces

more than 17000 fire brigades, more than 510 000 people

Forest armed police army in 9 Provinces

Inner Mongolia, Jilin, Heilongjiang, Yunnan, Sichuan, Xinjiang, Tibet, Gansu, Fujian



Using cartoon for publicity

人人有责
森林防火
防火虎威威

严禁在林区内吸烟
严禁在林内焚烧秸秆
严禁在林内野炊、用火
严禁在未成林地方内放牧

Professional fire brigade

Fire source management

野外用火许可证
田东政府
www.sxhctv.com
HCTV
我市加大野外火源巡查整治确保森林安全

Fire check station

防火检查站

Forest rangers

西塘镇2012年护林员培训

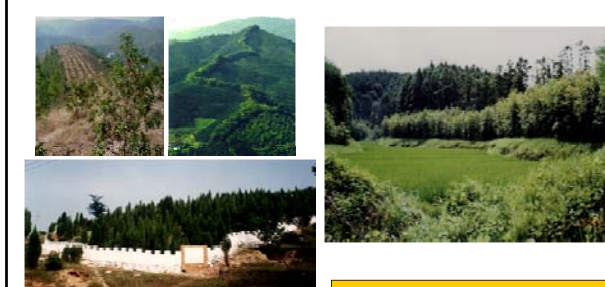
Patrol

Fuel management



Four photographs illustrating fuel management: 1) Workers in protective gear clearing brush and debris in a forest. 2) A yellow tractor clearing a path through a field of brush. 3) Workers using tools to clear a dirt path. 4) Workers in a forest clearing brush.

Fuelbreaks



Four photographs showing fuelbreaks: 1) A dirt path through a forest. 2) A dirt path through a forest. 3) A dirt path through a forest. 4) A dirt path through a forest.

Fuelbreaks nearly 1,190,000 km

Fire fighting



Five photographs showing fire fighting: 1) Workers using tools to clear brush. 2) Workers using tools to clear brush. 3) Workers using tools to clear brush. 4) A helicopter in flight. 5) A fire truck with a water cannon.

The prime minister attaches great importance to the work of forest fire prevention




Two photographs: 1) The prime minister, Wen Jiabao, using a broom to sweep a path. 2) The prime minister sitting at a desk during a meeting.

Hand tools for fire fighting



Four photographs of hand tools: 1) A collection of long-handled tools. 2) A red fire extinguisher. 3) A red fire extinguisher. 4) A fire truck with a water cannon.



Questions?
Thank you all!

来源网 nopic.com