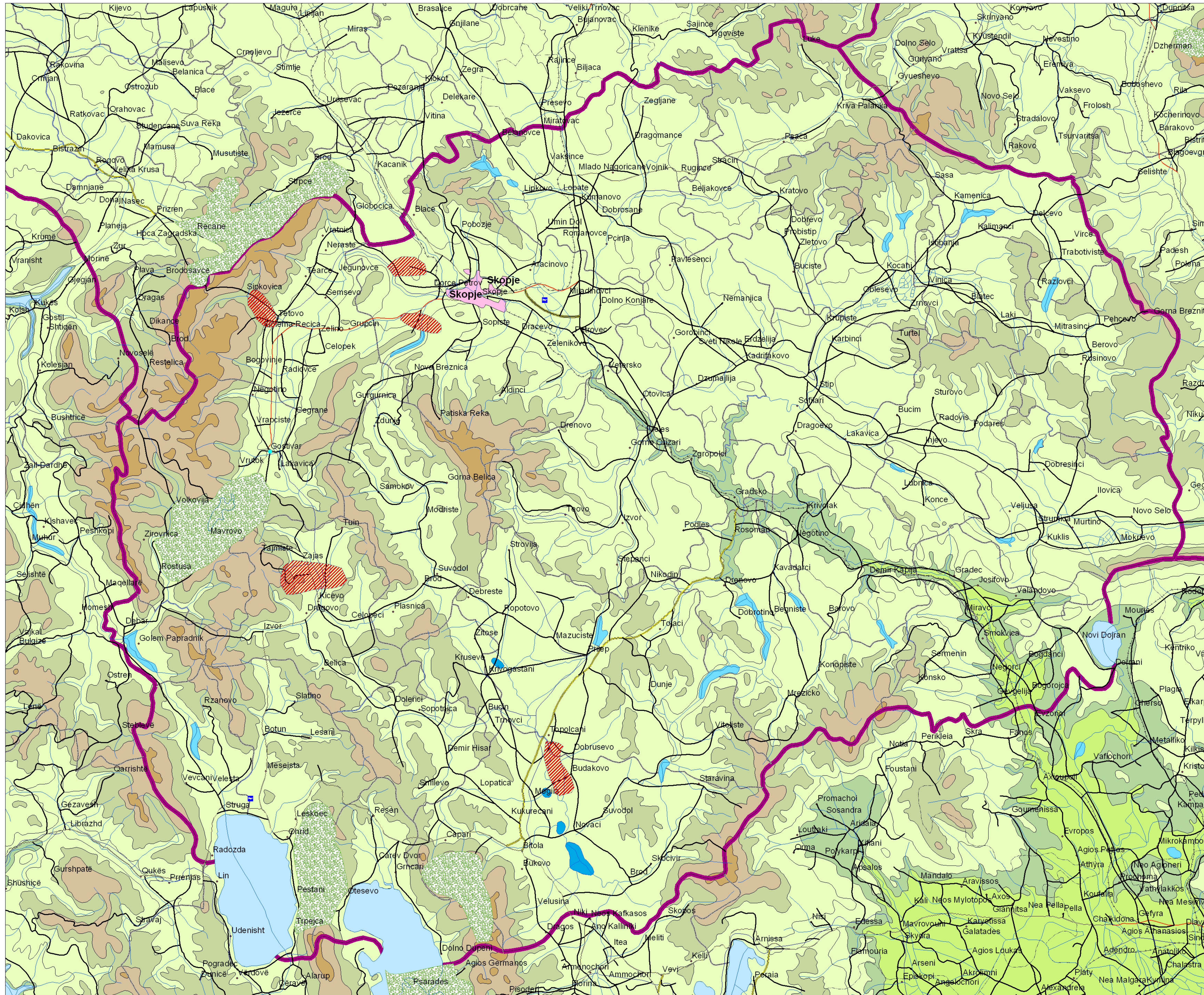


Macedonia - Forest fires



Critical spots:

- Katlanovo - Rudnik nearby Skopje
- Kozjak - Hydro Electric Power Station municipality nearby Skopje
- Siricino - surrounding of Tetovo municipality
- Oslovej - Hydro Electric Power Station municipality of Kicevo
- Borila, between Prilep and Bitola municipality



affected areas

Legend

Airports	National Parks	<all other values>
Rivers, channels	<all other values>	Relief and bathymetry
Roads	land 4000 - 5000m	land 3000 - 4000m
Secondary single	land 2000 - 3000m	land 1500 - 2000m
main dual	land 1000 - 2000m	land 1000 - 1500m
main dual (E route)	land 900 - 1000m	land 700 - 1000m
main single	land 500 - 1000m	land 700 - 900m
main single (E route)	land 500 - 700m	land 400 - 500m
motorway	land 200 - 500m	land 300 - 400m
motorway (E route)	land 200 - 300m	land 100 - 200m
Railways, ferries	land 0 - 100m	land below sea level
<all other values>	bathymetry 0 - 20m	bathymetry land - 50m
car ferry route	bathymetry 20 - 50m	bathymetry 50 - 100m
high speed railway	bathymetry 100 - 200m	bathymetry 200 - 500m
high speed railway tunnel (large)	bathymetry 500 - 1000m	bathymetry 1000 - 2000m
main railway	bathymetry 2000 - 3000m	bathymetry 3000 - 4000m
passenger ferry route	bathymetry 4000 - 5000m	bathymetry 5000 - 6000m
railway ferry route	lake A	lake B
<all other values>	lake C	marsh
Macedonia	wide river	
Macedonia towns and villages		
Lakes		
<all other values>		
CODE_DESC		

