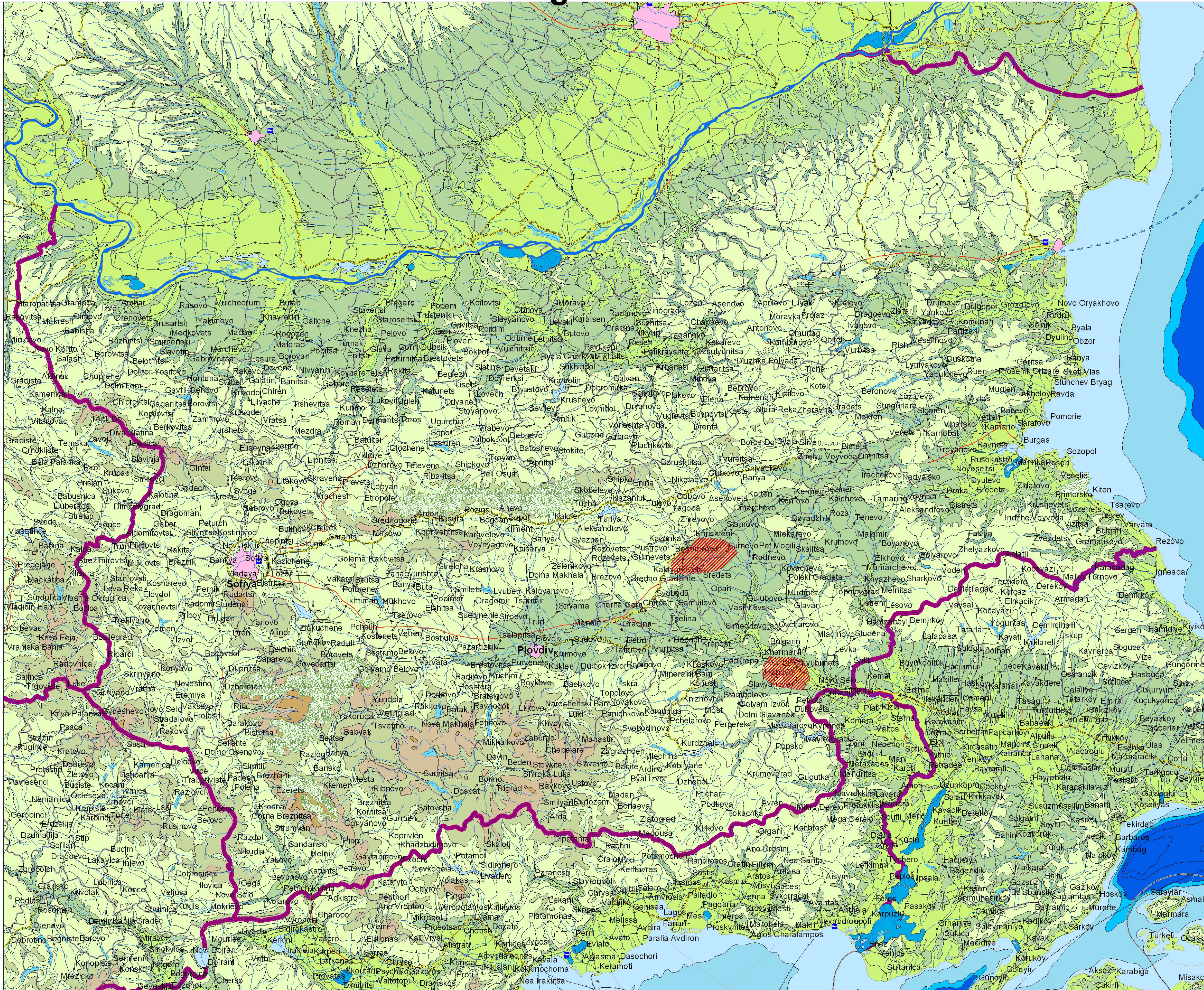


Bulgaria - Forest fires



Critical spots:

- Stara Zagora
- Kharmanli



affected areas

Legend

- Airports
 - National Parks
 - Rivers, channels
 - <all other values>
- Roads**
- Secondary single
- Roads**
- main dual
 - main dual (E route)
 - main single
 - main single (E route)
 - motorway
 - motorway (E route)
 - <all other values>
- Railways, ferries**
- <all other values>
 - car ferry route
 - high speed railway
 - high speed railway tunnel (large)
 - main railway
 - passenger ferry route
 - railway ferry route
 - <all other values>
- Lakes**
- <all other values>
 - lake A
 - lake B
 - lake C
 - marsh
 - wide river
- CODE_DESC**
- lake A
 - lake B
 - lake C
 - marsh
 - wide river
- Contour polygons**
- <all other values>

Relief and bathymetry

- land 4000 - 5000m
- land 3000 - 4000m
- land 2000 - 3000m
- land 1500 - 2000m
- land 1000 - 2000m
- land 1000 - 1500m
- land 900 - 1000m
- land 700 - 1000m
- land 500 - 1000m
- land 700 - 900m
- land 500 - 700m
- land 400 - 500m
- land 200 - 500m
- land 300 - 400m
- land 200 - 300m
- land 100 - 200m
- land 0 - 100m
- land below sea level
- bathymetry 0 - 20m
- bathymetry land - 50m
- bathymetry 20 - 50m
- bathymetry 50 - 100m
- bathymetry 100 - 200m
- bathymetry 200 - 500m
- bathymetry 500 - 1000m
- bathymetry 1000 - 2000m
- bathymetry 2000 - 3000m
- bathymetry 3000 - 4000m
- bathymetry 4000 - 5000m
- bathymetry 5000 - 6000m

